



EMERGENCY MEDICINE

- 24-hour personalized care for critically ill or injured pets
- Doctors with special interest and training in emergency medicine
- Nursing care by a highly skilled and caring staff
- Advanced medical therapy available around-the-clock
- Oxygen and transfusion therapy
- Soft-tissue emergency surgery
- STAT diagnostic testing



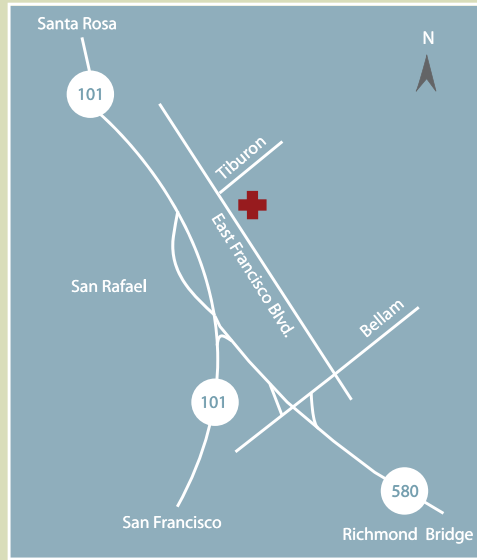
INTERNAL MEDICINE

- Consultations with board-certified internists
- Management of complex medical disorders
- Personalized care by highly trained veterinary technicians
- Color-flow ultrasound imaging
- Video endoscopic procedures
- Special diagnostic testing
- Transfusion and nutritional therapy



SURGERY

- Surgical consultations
- Management of complex surgical disorders
- Orthopedic surgery
- Soft-tissue and oncologic surgery
- Minimally invasive surgery
- Integrative case management approach with other specialists
- Neurosurgery
- Lameness exams



PET EMERGENCY & SPECIALTY CENTER OF MARIN
 901 East Francisco Blvd. • San Rafael, CA 94901
 415.456.7372 • www.pescm.com

From Highway 101 (North or South)

Shortly after taking the Richmond Bridge 580 Oakland exit in San Rafael, exit at the Francisco Blvd. off-ramp. From the left off-ramp lane, turn left on Bellam, passing below Hwy. 580. Turn left on Francisco Blvd. The hospital is ahead on the right, at the corner of Francisco Blvd. and Tiburon St.

From Highway 580 (from the East Bay)

After crossing the Richmond Bay Bridge, pass the first “Francisco Blvd./San Quentin” exit and continue approximately 1.7 miles to take the “Francisco Blvd./101 South” exit in San Rafael. Turn right from the off ramp onto Bellam and then make an immediate left on E. Francisco Blvd. The hospital is ahead on the right, at the corner of E. Francisco Blvd. and Tiburon St.



*Celebrating 10 Years of
 Providing Emergency Care*



We believe that pets enrich our lives and are truly members of the family. Along with veterinarians in general practice, we strive to promote the health of every pet.

24/7 Emergency & Specialty Care
 901 E. Francisco Blvd. San Rafael

415.456.7372

www.pescm.com

WELCOME

The Pet Emergency & Specialty Center of Marin is dedicated to providing compassionate, state-of-the-art medical care for your pet. As Marin's only 24-hour emergency care facility, our skilled team of doctors and nurses is available around the clock every day of the year.

Our goal is to improve the quality of life of every patient we treat.

Specialized Care

In the past decade new and exciting advances have been made in both human and veterinary medicine, allowing both people and pets to live longer and better lives. These developments have created a growing need for advanced veterinary training programs in specialized areas.

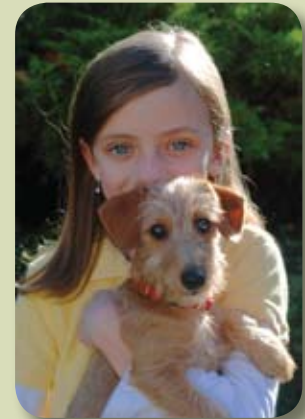
Each member of our team of specialists has completed rigorous academic and clinical training extending years beyond the standard four-year veterinary curriculum. As a result, our team of specialists is truly "world class."

24/7 Emergency & ICU Care

Our emergency service is available at any hour to assist you when your family veterinarian is not available or your pet needs intensive care. Our ICU serves the entire North Bay Area, providing advanced care by a specially-trained team of doctors and nurses using state-of-the-art equipment for patients with serious medical problems.

Whether your pet has a minor or major medical problem, we are committed to providing the best possible care.

Our greatest reward is seeing a sick or injured pet return home to his or her family!



Your family veterinarian is skilled in many areas but recognizes that at times it is in your pet's best interest to utilize the advanced services available at our hospital.

When your pet is referred for 24-hour emergency care or evaluation by one of our specialists, we work closely with your family veterinarian, sharing information as part of a team of professionals overseeing the care of your pet.

Our mutual goal is to help your pet make a speedy recovery.

Your family veterinarian may refer you to our facility if your pet would benefit from:

- A procedure such as advanced surgery, ultrasound, endoscopy, laparoscopy, or cancer therapy
- A consultation with one of our specialists
- 24-hour emergency or critical care

If you are referred to our hospital to see a specialist, please call to schedule an appointment and bring copies of your pet's medical information (records, lab results, and radiographs). Our specialist will discuss his or her findings with both you and your family veterinarian.

More than pets...family

We are committed to providing every patient with the same level of care and compassion we would want for our own pets.